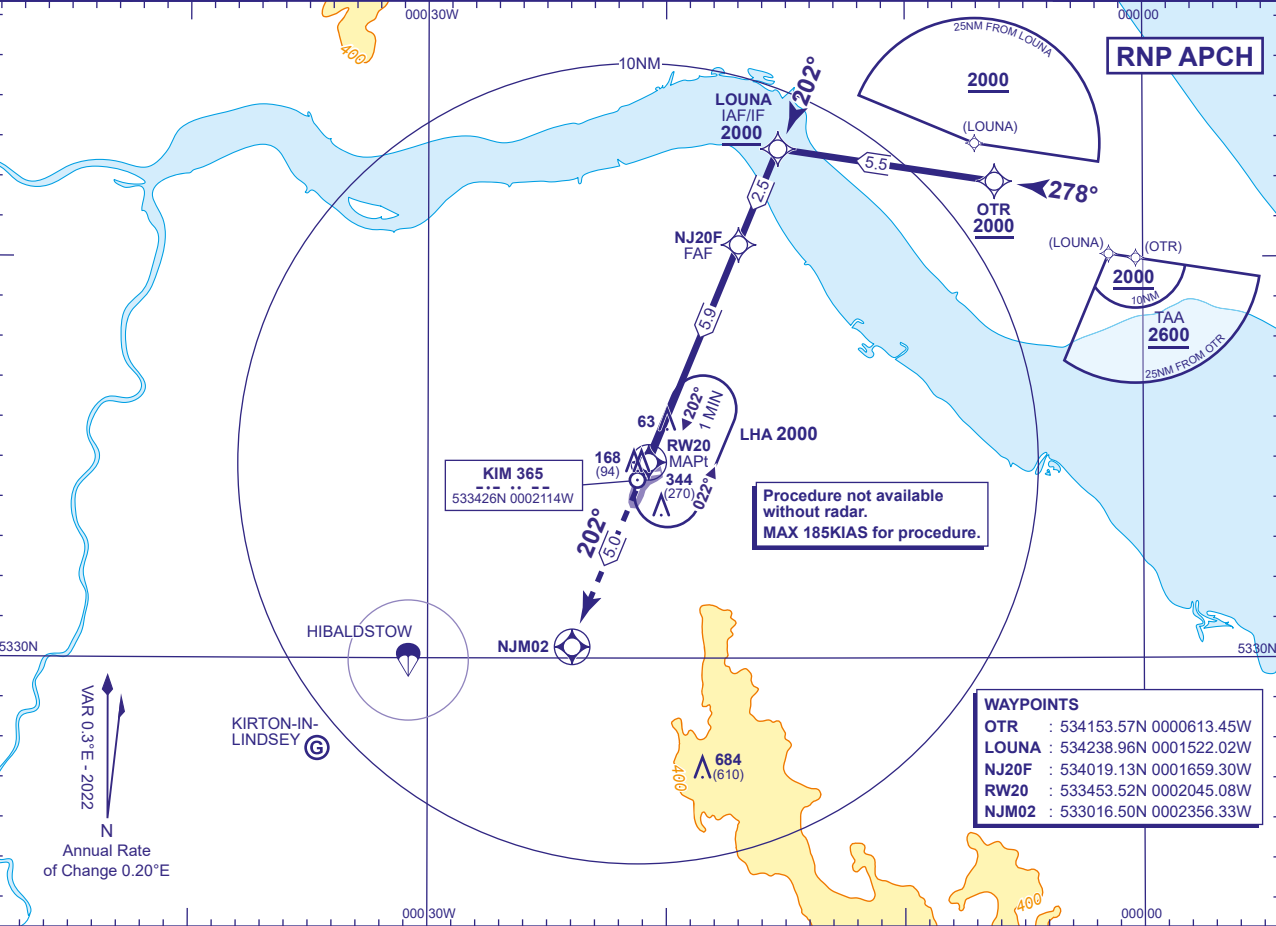


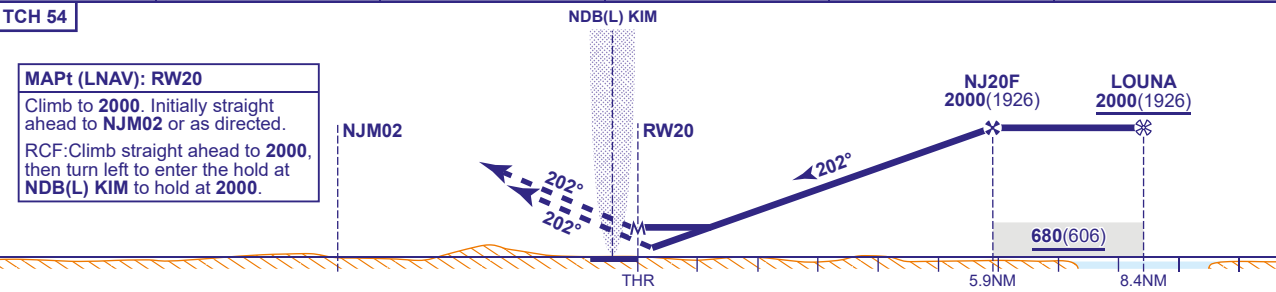
INSTRUMENT APPROACH CHART - ICAO

HUMBERSIDE
RNP
RWY 20
(ACFT CAT A,B,C,D)

<div><div>26</div><div>MSA 25NM ARP</div></div>	<div><div>18</div><div>MSA 10NM ARP</div></div>	APP 119.130	HUMBERSIDE APPROACH	AD ELEVATION 121	<div>RNP RWY 20</div> <div>(ACFT CAT A,B,C,D)</div>
		TWR 124.905, 119.130	HUMBERSIDE TOWER	THR ELEVATION 74	
		RAD 119.130, 129.255	HUMBERSIDE RADAR	OBSTACLE ELEVATION 684 AMSL (610) (ABOVE THR)	
		ATIS 124.130	HUMBERSIDE INFORMATION		
					MIN TEMP -15°C
					TRANSITION ALTITUDE 3000



RECOMMENDED PROFILE VNAV - Vertical path Angle 3.0° (LNAV 5.24%), 318FT/NM					
NM to RW20	5	4	3	2	1
ALT(HGT)	1720(1646)	1400(1326)	1080(1006)	760(686)	450(376)



Aircraft Category		A	B	C	D	Rate of descent	G/S KT	160	140	120	100	80
OCA (OCH)	LNAV/VNAV	340(266)	350(276)	360(286)	380(306)		FT/MIN	850	740	640	530	420
	LNAV	510(436)	510(436)	510(436)	510(436)							
VM(C)OCA (OCH AAL)		Total Area	690(569)	690(569)	990(869)	1050(929)						

CHANGE (5/24): LNAV OCA(OCH). VM(C)(OCH AAL) CAT A/B. SDF/MOCA WITHDRAWN. RECOMMENDED PROFILE.